



Stanwood High School Open House

December 11, 2021

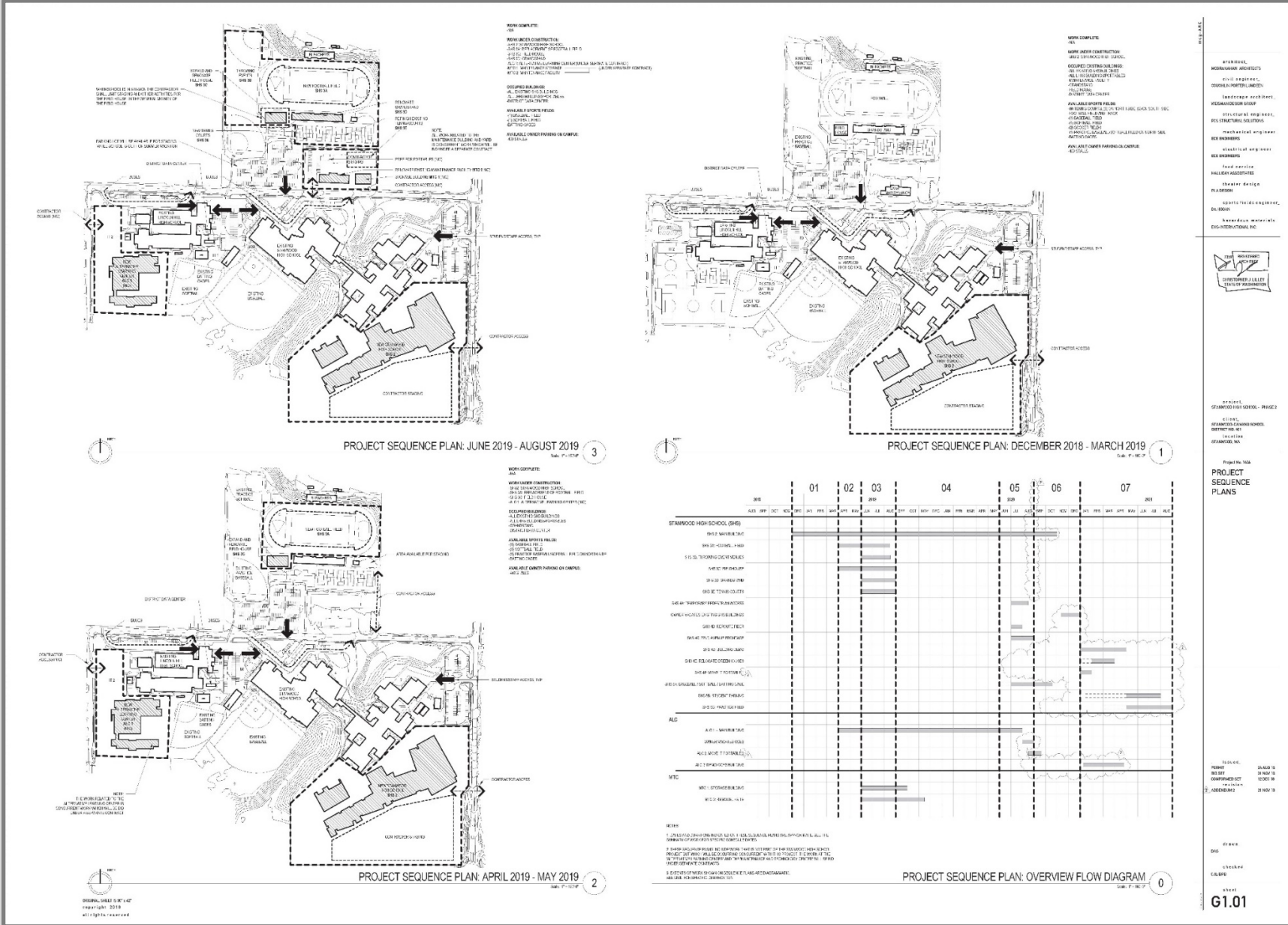




In February of 2017, the Stanwood-Camano community passed a \$147.5 million bond to build a new Stanwood High School, Alternative Learning Center to house Lincoln Hill HS, Lincoln Academy and Saratoga School, and a new Maintenance and Technology Center.



McGranahan Architects worked with the district and community to generate ideas and discuss priorities for the proposed bond by holding public design workshops, where participants could provide input on what their vision was for the facilities.





A groundbreaking ceremony was held after Taylor's Excavators, Inc. won Phase 1 of the project with a bid of \$4,567,013 in May of 2018. Phase 1 work included the demo of existing fields, site grading, building pad preparation, soldier pile retaining walls, underground utilities and detention facilities.



Phase 1
Demo and site prep.



Phase 1
Soldier pile retaining wall.



Phase 1
Underground stormwater detention facility.



Before and After – Phase 1



Cornerstone General Contractors, Inc. won Phase 2 of the project with a bid of \$91,445,901 in December of 2018. Work was able to begin immediately because of the Phase 1 site prep.



Geopiers were utilized as part of the building foundation.



Excavation for deep utilities, structural footings and grade beams.



Formwork and reinforcing steel for foundations and walls.



Masons laid approximately **100,000** Cement Masonry Units (CMU), ranging from 18-36 pounds each and filled the walls with **1250** Cubic Yards of grout.



Mason's scaffolding set up for placement of structural block.



Structural steel being erected.



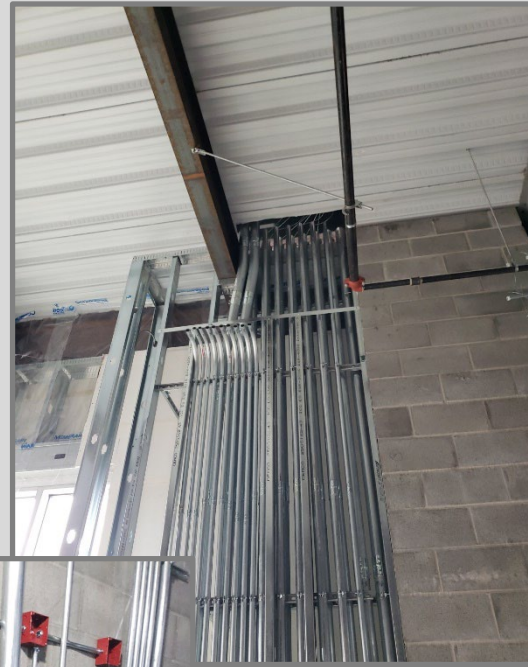
Floor slabs being prepped and placed.



Masons laid approximately **250,000** individual bricks on this project.



Brick. Lots of brick.



Electricians pulled **250 miles** of wire.
(and connected it to something at
both ends)



Mechanical, Electrical & Plumbing (MEP)

Weather barrier (orange)

Roofing (gray membrane)

Sheathing (yellow)



Insulation at brick (pink)

Insulation at metal panel (green)

Roofing (white insulation)

Roofing (yellow vapor barrier)

Exterior components in progress.



Demolition of old SHS.



Before and After – Commons



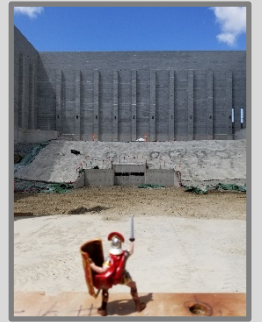
Before and After – Main Gym



Before and After (+/- 14' and rotated 90 degrees) – Library



Before and After – CTE



Before and After – PAC



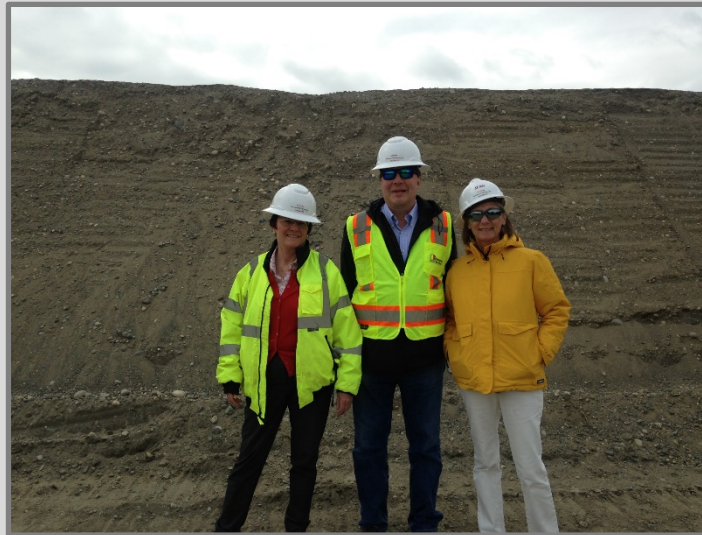
Football and multi-purpose fields.



Baseball and fastpitch fields.



District 2 Representative Rick Larsen visits the site in June of 2019 on a tour of the 2017 Bond projects and again in April of 2021.



Dr. Shumate

DESIGN TEAM

Architect - McGranahan Architects

Structural Engineer - PCS Structural Solutions

Mechanical Engineer - BCE Engineers

Electrical Engineer - BCE Engineers

Civil Engineer - Coughlin Porter Lundeen

Landscape Architect - Weisman Design Group

Theater – PLA Design

Fields – DA Hogan

Kitchen – Halliday Associates

CONSTRUCTION TEAM

General Contractor Phase 2 – Cornerstone General Contractors, Inc.

Electrical - Milne Electric

Mechanical - Ramsett Mechanical

Earthwork Phase 2 & General Phase 1 - Taylor's Excavators

Reinforcing Steel - Morse Steel

Masonry – R&D Masonry

Brick Supplier – Mutual Materials

Structural Steel – Evergreen Erectors

Steel Detailing -

Storefront and Windows – Seattle Glass

Framing and Drywall- Washington Best Finishes

Painting - Spectrum

Metal Siding and Roofing – Axiom CC and Axiom D7

Audio/Visual - Dimensional Communications

CONSTRUCTION TEAM (Cont.)

PAC – Stagecraft (Rigging and Lighting), Strand (Lighting Controls)

Gym Flooring - T & T Flooring

Food Service Equipment – Smith and Greene

Landscape – Specialized Landscape

Casework - Central Cabinet Systems

Flooring – Beresford (Carpet), Rubenstein's (Rubber/Vinyl)

CTE Building – BahnMiller Construction

Stadium and Multi-Purpose Fields – FieldTurf

Ball Fields – Coast to Coast

OWNER CONSULTANT TEAM

Geotechnical - Associated Earth Sciences, Inc.

Testing and Inspection - GeoTest

Envelope - Cornerstone Architectural Group

Hazardous Materials - EHSI

Commissioning - Welsh Commissioning Group

FURNITURE

Saxton Bradley